



# VECTOR 52" DC CEILING FAN



## The popular Vector fans now comes with DC motor!

<b>40W</b> DC MOTOR	<b>ABS</b> BLADES	<b>52</b> INCH 1320mm	<b>14200</b> m <sup>3</sup> /hr AIRFLOW	<b>10°</b> CEILING RAKE MAX	<b>6YR</b> WARRANTY
------------------------	----------------------	-----------------------------	---	-----------------------------------	------------------------

The Vector DC now comes with an all new quiet and powerful DC motor that produces market leading airflow. It has the same patented EZI-FIT blades design that allow super fast installation for tradies and electricians. Optional wall controller (hardwired) & Smart WiFi receiver is available to purchase separately.

- Patented\* Ezi-Fit blades reduce fan assembly and installation time
- Durable corrosion and UV resistant body and canopy construction with high strength moulded ABS blades
- 6 speed remote control included
- Reverse Summer/Winter function
- 85% pre-assembled out of the box for fast installation
- Quiet and efficient 40W DC motor
- Uses our Quick Connect Plug System to reduce installation time
- Suitable for Indoor and outdoor undercover use
- Optional Wall controller and Smart Receiver available (sold separately)



6 SPEED CONTROLLER (INCLUDED)



WALL MOUNT CONTROLLER (SOLD SEPARATELY)



PURE WHITE



MATT BLACK

### APPLICATIONS

- Bedrooms, lounge and family rooms
- Indoors or enclosed alfresco areas not exposed to the weather
- Suitable for coastal locations





# VECTOR 52" DC CEILING FAN

## TECHNICAL SPECIFICATIONS

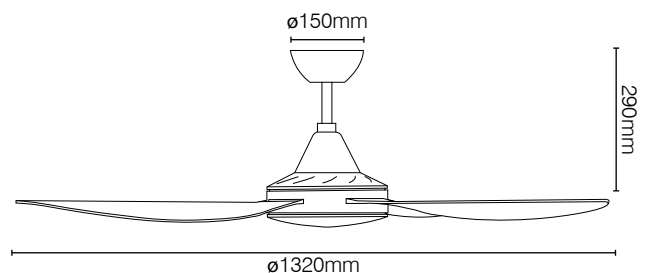
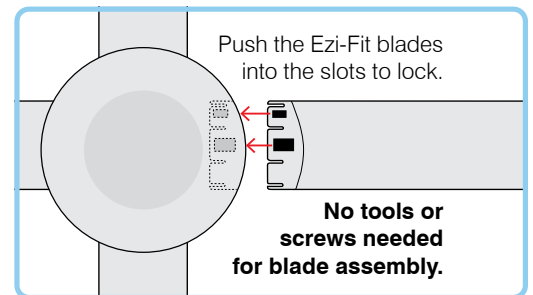
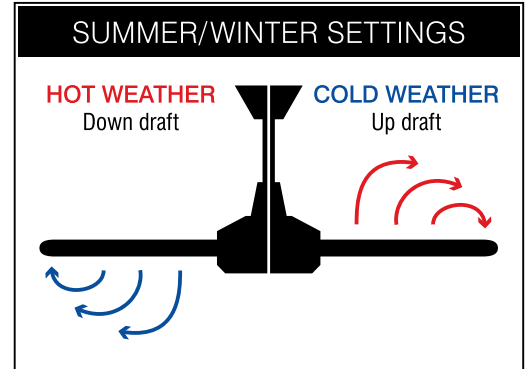
<b>Size</b>	52 inch (1320mm)
<b>Motor Type</b>	DC (Direct Current)
<b>Operating Voltage</b>	220-240V AC / 50Hz
<b>Motor Wattage</b>	40W
<b>Construction</b>	ABS body and canopy
<b>Blade Material</b>	Moulded ABS (x4)
<b>Ceiling install</b>	Hangsure
<b>Blade Pitch</b>	14 degree (effective)
<b>Ceiling Rake</b>	10 degree max
<b>Control</b>	6 Speed Remote controller included 6 Speed Wall controller (sold separately)
<b>Other models available</b>	22687/05, 22687/06: 48-inch without light 22693/05, 22693/06: 48-inch with light 22695/05, 22695/06: 52-inch with light 22691/05, 22691/06: 56-inch without light 22697/05, 22697/06: 56-inch with light
<b>Warranty</b>	3 year in-home plus 3 year replacement (6-Year) <i>*Limited warranty for wall controller, remote controller and light. Refer to warranty card inside the box for more details.</i>
<b>Standards:</b>	AS/NZS 60335-1 AS/NZS 60335-2-80 AS/NZS 60598-1 AS/NZS 60598-2-1
<b>Patent:</b>	2018201157 (pending)
<b>Air Movement:</b>	14,200m <sup>3</sup> /hr MAX



## ACCESSORIES (sold separately)

Extension Rod with loom kits, 900mm x Ø21mm:	100550/05 white, 100550/06 black
Extension Rod with loom kits, 1800mm x Ø21mm:	21912/05 white 180cm 21912/06 matt black 180cm
Wall Controller:	DCWALLCONTROL
Smart Receiver:	VECTORDCSMART

## INSTALLATION

Must be installed by a licensed electrician



	MODEL	COLOUR	DESCRIPTION	BOX SIZE	GROSS WEIGHT	BOX QTY	BARCODE/TUN
<b>RETAIL BOX</b>	22689/05	Pure White	Vector 52 DC Ceiling Fan	W592 x H330 x D290 mm	6.7 kg	1 pc	 9 312641 226895 >
<b>RETAIL BOX</b>	22689/06	Matt Black	Vector 52 DC Ceiling Fan	W592 x H330 x D290 mm	6.7 kg	1 pc	 9 312641 226901 >