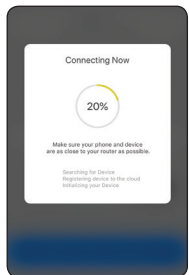
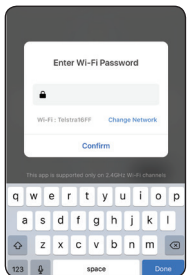
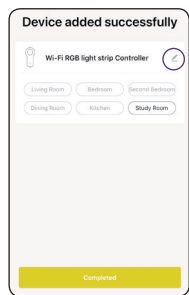


5. Enter your WiFi password.



Connection will now begin.

6. Once connected you'll get a menu 'Adding device succeeded'.



Select the room device and press 'Done'.

You can click on the pen to change the device name.

7. You can now control your Smart Device with your App.

Warning

1. To prevent injury, this apparatus must be installed Safely and correctly.
2. Do not open or tamper with smart device. Injury may occur.
3. For indoor use only. Not suitable outdoors.
5. Do not allow children to play with wall switch tuning ON/OFF rapidly. This can cause smart device to reset.
6. Power Surge/Power Loss could possibly reset smart device. If this happens follow setup instructions.

NB: BrilliantSmart app screens may differ due to application updates & improvements.

Disposal

Please dispose of this packaging material thoughtfully.

Please dispose of this product thoughtfully once it has passed its useful life.

When your smart device comes to the end of its life or you choose to update or upgrade it, please do not dispose of it with your normal household waste. Please recycle where facilities exist.

When disposing of this fitting, check with your local authority for suitable options.

Warranty

Brilliant Lighting warrants this product against defects in manufacture and workmanship for a period of 12 months from date of purchase. Warranty does not include damage or loss arising from incorrect installation, operation or maintenance of this product, damage caused through modification, or incorrect installation.

Our goods come with guarantees that cannot be excluded under the Australian Consumer Law. You are entitled to a replacement or refund for a major failure and compensation for any other reasonably foreseeable loss or damage. You are also entitled to have the goods repaired or replaced if goods fail to be of acceptable quality and the failure does not amount to a major failure.

Any claim under this warranty must be made within 12 months of the date of purchase of the product.

Refer to our website brilliantlighting.com.au for terms and conditions and warranty claims.

This warranty is given by:

Brilliant Lighting (Aust) Pty. Ltd.
ABN 37 006 203 694
956 Stud Road Rowville, VIC 3178
Phone: 03 9765 2555
Email: warranty@brilliantlighting.com.au

MADE IN CHINA

Troubleshooting

Problem:
Smart device does not switch ON

Possible Cause	Suggested Solution
No Mains Power	Check connections, fuses, contacts and switches

Problem:
Cannot link smart device with BrilliantSmart app

Possible Cause	Suggested Solution
1. Modem signal weak	Place device and modem closer together
2. Router/modem/smart phone firewall is enabled	Disable firewalls on all devices
3. Internet connection is down	Contact your provider
4. BrilliantSmart app not installed correctly	Remove app and re-install

For any other problems connecting your smart device to BrilliantSmart app please visit: www.brilliantsmart.com.au/faqs

Brilliant Lighting
956 Stud Road
Rowville Vic 3178 Australia

www.brilliantlighting.com.au

Australian Sales
T 03 9765 2555
T 1800 817 754 (interstate only)
F 03 9763 0277
E warranty@brilliantlighting.com.au

New Zealand Sales
T 09 974 9618
E sales@brilliantlighting.co.nz



WiFi RGB+W
LED Strip Light
Controller
20794



Makes your existing 5 pin LED strip lighting Smart



USER MANUAL

Box content

- Smart WiFi RGB+W LED Strip Light Controller complete with 5 pin adaptor
- User Manual x 1

RGB+W
5-pin connector

Manual Control
set/reset button

Power adaptor
connector



1

Technical Specifications

Input voltage: 12V DC (5V – 28V)

Output voltage: 12V-24V DC

Current: 2A max

Weight: 0.018kg

Size: Total length 204mm

Material: Polycarbonate

Warranty: 1 year

Security: Mac Encryption; WEP/WAPI/TKIP/AES

WiFi Standard: IEEE802.11b/g/n

System Req's: iOS 8.0 or higher, Android 4.1 or higher

BEFORE INSTALLATION, PLEASE CHECK THAT THE LOCATION OF THE SMART DEVICE IS WITHIN RANGE OF YOUR HOME WIFI AND SIGNAL IS STRONG.

Installation

Important Safety Issues

Be aware of the height of your installation, if applicable. Refer to 'Working on Heights' guide from your local Worksafe Authorities.

This product is NOT suitable for damp or explosive environments. Modification of this product will void any warranty. Indoor use only.

Safety Class

Class III Construction

2

INSTALLATION

Install your Smart RGB+W Strip Light Controller between the new or existing LED strip light and the power supply unit.

Ensure the connection points on the controller and strip are aligned.

Strip controller
RGB output plug

New or existing
LED strip socket



Strip controller
socket

Power supply
plug



3

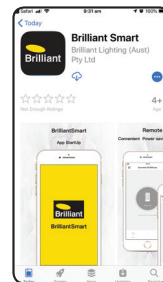
Connect to your WiFi

Ensure your mobile phone is connected to your 2.4GHz WiFi network.

Your mobile phone and your smart device needs to be within good signal strength range of your WiFi router.

Download the BrilliantSmart App

Please download the free BrilliantSmart app from the app store or Google Play store, or scan the QR code below.



Register the BrilliantSmart App

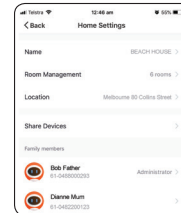
Open the BrilliantSmart app. For new users, register a new account or if existing user, login with your user name and password.

4

Configure your BrilliantSmart App

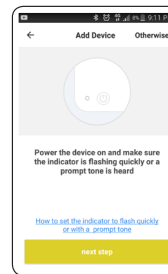
Setting up your Home

You can setup multiple homes or locations. Click 'Add Home' button. Or click on 'Home' top left if you are adding or modifying details then 'Home Management' to setup your home(s), add or rename rooms and share devices.



Add your Smart Device to your App

1. Once installation is complete, power on your Smart RGB+W Strip Controller. The light will begin blinking rapidly and be ready to pair (2 times per second). (If the strip light does not start blinking automatically, press and hold the reset button on your smart device for 3-5 seconds until the light begin to rapidly blink.)
2. Open the BrilliantSmart App, tap 'Add Device' (if empty room) or select '+' to add your Smart Device.
3. Select 'Connector' in the list of devices.
4. If smart device is blinking rapidly then press 'Confirm light blinks rapidly'.



5