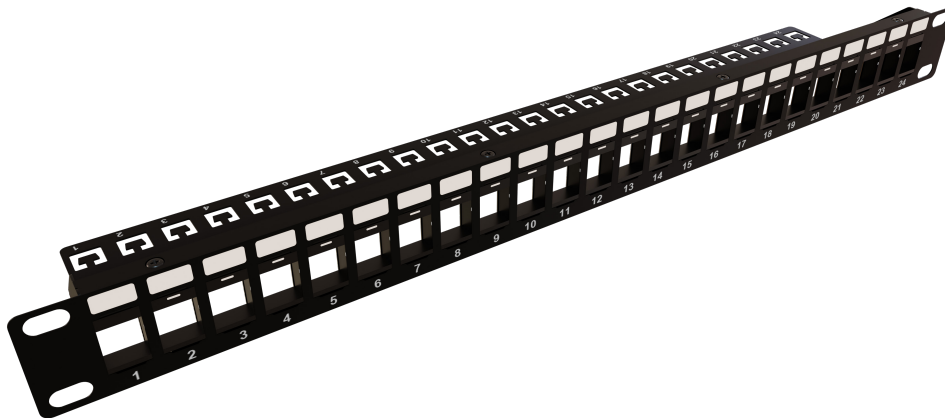


## CERTECH 24 Port 19" Cat6A Shielded Patch Panel

**PP24UKSH-NL**

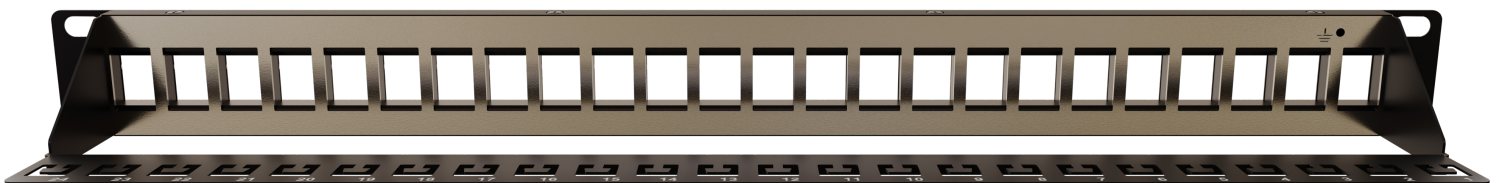


### DESCRIPTION

The CERTECH patch panel is designed and manufactured for Australian standards and conditions. The 1RU, 19 inch (482.6mm) wide format is compatible with the industry standard 19 inch wide server racks/data cabinets. It is constructed of cold rolled steel for superior strength and durability, includes an integrated cable management bar at the rear, 4 cage nuts for mounting and an earth link cable and lug for earth connection. The black colour is to aesthetically match the CERTECH (and industry standard) data cabinet ranges. The 24 keystone apertures house 24 Cat6 or Cat 6A shielded jacks and the flat labelling areas are designed for either manual, printed or traffolyte labels.

### FEATURES

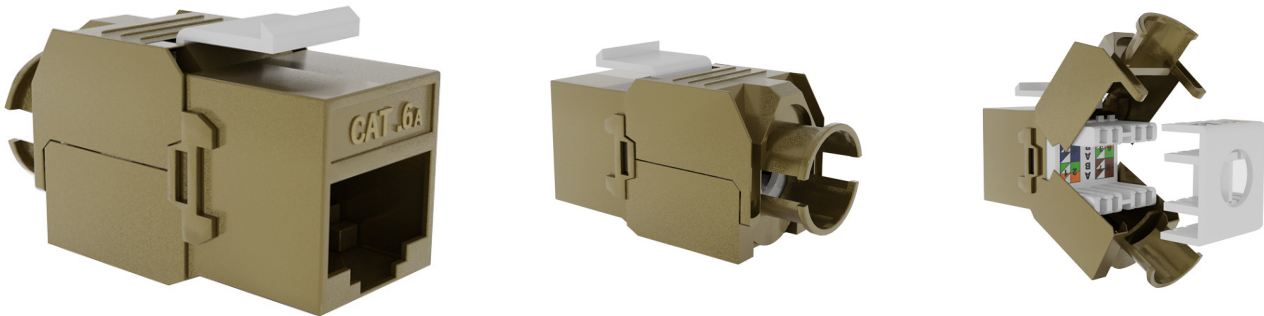
- Accepts up to 24 shielded Keystone jacks.
- Constructed with cold rolled steel (patch panel and cable management bar)
- The front of the panel is a flat, one piece design for ease of labelling
- Suitable for CERTECH Keystone jacks (JKC6ASHTL)
- Equipped with an earthing wire and lug
- For ease of installation, the keystone jacks (sold separately) can be terminated to the cable and then snapped into each individual port on the patch panel.
- Dimensions (including rear support bar): 482 (W) x 44 (H) x 94 (D)
- ROHS and REACH Compliant
- Coating: Black Powder Coated



DESIGNED AND MANUFACTURED TO AUSTRALIAN STANDARDS AND CONDITIONS

## Cat6A RJ-45 Shielded Slimline Tool-less Keystone Jack

**JKC6ASHTL**



### DESCRIPTION

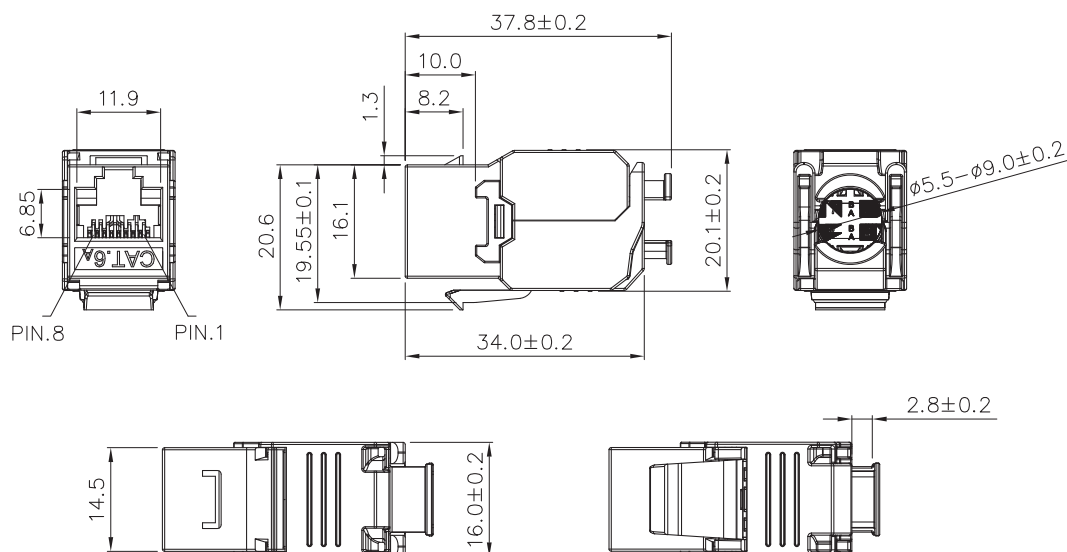
The CERTECH Cat 6A shielded RJ45 keystone jacks feature a tool less style termination to reduce termination time, fully enclosed IDCs for optimum performance and reliability, and dual earth connection points to ensure a robust, reliable connection. When combined with a CERTECH Cat 6A shielded cable and installed by a CERTECH certified installer, the permanent links exceed the performance criteria outlined in AS 11801 (1-6) and can be certified for a 25 year warranty under the CERTECH 25 year warranty program.

### FEATURES

- UL safety listed
- DELTA and ETL verified Cat6A component rated performance
- Power over HDBaseT (PoHDBaseT - up to 100W)
- Performance conforms to ANSI/TIA-568-C.2 Category 6A specification
- Available with 180° cable exit
- Tool-less termination
- RoHS and REACH compliant
- GECA approved
- Fully shielded design optimizes shield effectiveness protection from EMI and alien crosstalk
- Offers 10G channel solution of your local area networking

### STANDARDS

Name	IEEE Standard	Power at Port	Current/Disconnection under load
PoE	IEEE 802.3af	15.5	Compliant
PoE+	IEEE 802.3at	30W	Compliant
PoE++	IEEE 802.3bt (Type 3)	60W	Compliant
PoE++	IEEE 802.3bt (Type 4)	100W	Compliant



DESIGNED AND MANUFACTURED TO AUSTRALIAN STANDARDS AND CONDITIONS

## SPECIFICATION

<b>RJ45 Jack</b>	Housing:	Zinc Die-Casting with Nickel plated.
	Contact Bracket:	PC, UL 94-V2, Transparent colour.
<b>RJ45 Jack Contact</b>	Material:	Phosphor bronze with nickel plated
	Finish:	50 micro-inch gold plated on plug contact area
<b>IDC</b>	Housing:	PC+Glass Fiber, UL 94-V2
	Terminal:	Phosphor Bronze with tin plated
	Cap for toolfree:	PC+Glass Fiber, white colour, UL 94-V2
	Clip:	Stainless Steel.
	Grounding Contact:	Zinc Die-Casting with Nickel plated.
	PCB:	FR4, UL 94-VO
<b>Performance</b>	The Cat.6A transmission performance complies with ANSI/TIA 568 C.2 standard	
	T568A & T568B wiring	
	Insertion Force:	30N max. (IEC 60603-7-5)
	Retention Strength:	7.7 kg between plug
	Operating Temperature:	- 10°C to 60°C (ISO/IEC 11801, ANSI/TIA 568C.2)
<b>IDC:</b>		Suitable for 23-26 AWG solid wire, conductor
<b>Tool-less:</b>		Using the IDC Cap for wire management

