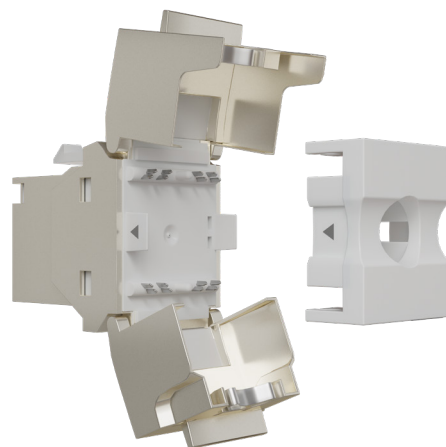
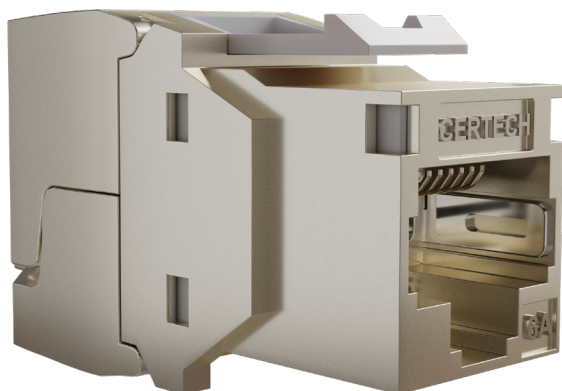


Cat6A STP Keystone Jack (6/24pk)

JKC6ASTP-6/24



DESCRIPTION

The CERTECH Cat 6A shielded RJ45 keystone jacks feature a tool-less style termination to reduce termination time, fully enclosed IDCs for optimum performance and reliability, and dual earth connection points to ensure a robust, reliable connection. When combined with a CERTECH Cat 6A shielded cable and installed by a CERTECH certified installer, the permanent links exceed the performance criteria outlined in AS 11801 (1-6) and can be certified for a 25 year warranty under the CERTECH 25 year warranty program.

FEATURES

- UL safety listed
- DELTA and ETL verified Cat6A component rated performance
- 180° cable exit
- Tool-less termination
- RoHS and REACH compliant
- Fully enclosed IDCs

STANDARDS

- AS/CA S008 (Australian)
- AS 11801 (1-6) (Australian)
- ANSI/TIA-568.2-D (North American)
- IEC 60603-7:2020 (International)
- UL 1863 (International)

Power over Ethernet (PoE)			
Name	IEEE Standard	Power from PSE	Current/Disconnection under load
PoE	IEEE 802.3af	15.5W	Compliant
PoE+	IEEE 802.3at	30W	Compliant
PoE++	IEEE 802.3bt (Type 3)	60W	Compliant
PoE++	IEEE 802.3bt (Type 4)	100W	Compliant

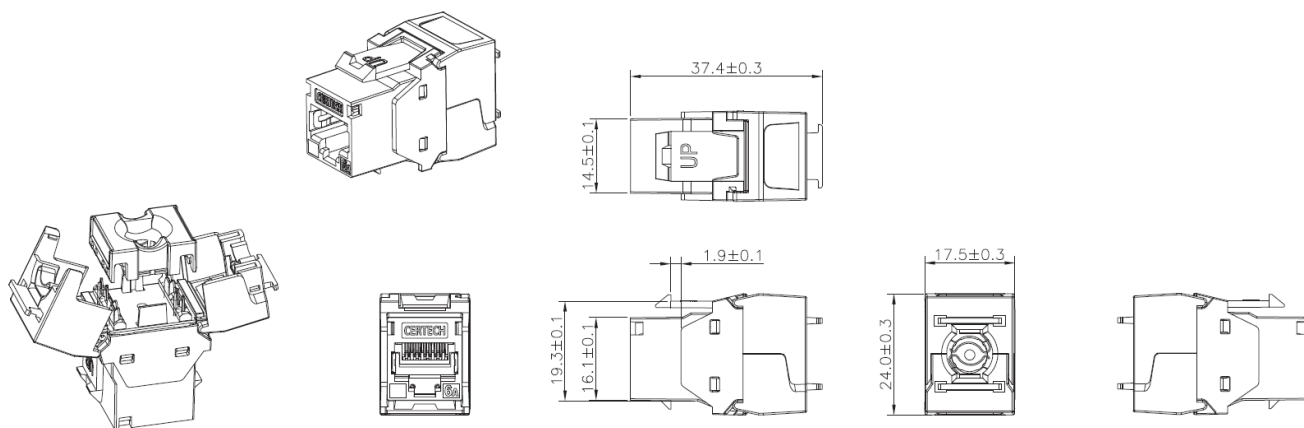
APPLICATIONS

- Supports 10G base-T ethernet and backwards compatible to 10/100/1G Base-T ethernet
- Power over HDBaseT (PoHDBaseT - up to 100W)
- Performance conforms to ANSI/TIA568.2-D and AS/CA 11801 (1-6)
- Provides verified, high speed 10GB (Class Ea) channel solution for Local Area Networks



SPECIFICATION

RJ45 Jack	Housing:	Zinc Die-Casting with Nickel plated
	Contact Bracket:	PC, UL 94-V2, Transparent colour
RJ45 Jack Contact	Material:	Phosphor bronze with nickel plated
	Finish:	50 micro-inch gold plated on plug contact area
IDC	Housing:	PC+Glass Fiber, UL 94-V2
	Terminal:	Phosphor Bronze with tin plated
	Cap for toolfree:	PC+Glass Fiber, white colour, UL 94-V2
	Clip:	Stainless Steel
	Grounding Contact:	Zinc Die-Casting with Nickel plated
	PCB:	FR4, UL 94-VO
Performance	Wiring:	T568A & T568B
	Insertion Force:	30N max. (IEC 60603-7-5)
	Retention Strength:	7.7 kg between plug
	Operating Temperature:	- 10°C to 60°C (ISO/IEC 11801, ANSI/TIA 568C.2)
	IDC:	Suitable for 23-26 AWG solid wire, conductor
	Tool-less:	Using the IDC Cap for wire management
	Transmission:	The Cat.6A (class Ea) performance complies with ANSI/TIA 568 C.2 and AS11801(1-6) standards



DESIGNED AND MANUFACTURED TO AUSTRALIAN STANDARDS AND CONDITIONS