

## Cat6A S/FTP Super-Thin 10G Patch Lead, LSZH Jacket

**NPLSHC6AXX**



### DESCRIPTION

The CERTECH Cat6A S/FTP 34AWG Super-Thin 10G patch leads, rated at 500MHz, are the perfect solution for high-performance networking in compact spaces. The cable features an S/FTP (Shielded Foiled Twisted Pair) construction and a LSZH (Low Smoke Zero Halogen) jacket. These patch leads are engineered to meet the demands of modern networking environments, ensuring reliable and high-speed data transfer.

### FEATURES

- Cat6A S/FTP 34AWG
- 100% tested and channel certified by 3P, UL and ETL.
- Covered by a Lifetime warranty.
- ROHS Compliant.
- GECA Claim Authenticated (PVC Free)

### STANDARDS

- AS/CA S008:2020
- ISO/IEC 61935-2
- ANSI/TIA-568.2-D
- ISO/IEC 11801-(1-6)
- IEEE 802.3
- EN 50288-3-2
- IEC 60332-1-2
- ISO9001
- ISO14001

Name	IEEE Standard	Power at Port	Current/Disconnection under load
PoE	IEEE 802.3af	15.5	Compliant
PoE+	IEEE 802.3at	30W	Compliant
PoE++	IEEE 802.3bt (Type 3)	60W	Compliant
PoE++	IEEE 802.3bt (Type 4)	100W	Compliant

Available colours:



### SIZES AVAILABLE

0.15m, 0.25m, 0.5m, 0.75m, 1.0m, 1.25m, 1.5m, 2m, 2.5, 3m, 5m

### PRODUCT CODE LEGEND

**NPLSHC6A(XX)(XX)**

**Colour**

BL = Blue  
GN = Green

**Length**

0.3 = 0.3m  
10 = 10m

**I.E**

NPLSHC6ABL0.5  
NPLSHC6AGN10

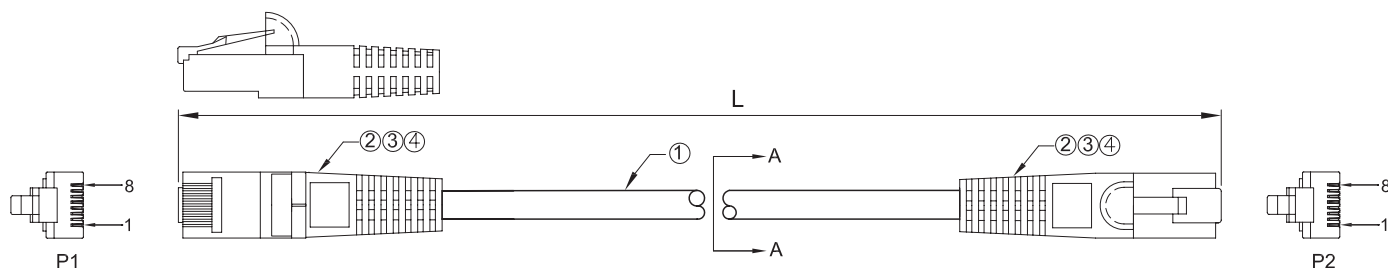
Colour		All Lengths (Metres)	Length*	Available Colour
BL = Blue	PP = Purple	0.15, 0.25,	0.15m	Blue, Green, Orange only
OR = Orange	GN = Green	0.5, 0.75, 1,		
PK = Pink	RD = Red	1.25, 1.5, 2,	0.25 - 5m	All colours
BK = Black	WH = White	2.5, 3, 5		
GY = Grey	YL = Yellow			



DESIGNED AND MANUFACTURED TO AUSTRALIAN STANDARDS AND CONDITIONS

## PRODUCT SPECIFICATIONS

Conductor Gauge	34AWG
Conductor Type	Stranded
Performance Level	Channel Compliant
Cable Construction	S/FTP
Jacket Material	PVC
Plug Type	RJ45 8P8C
Plug Housing Material	LSZH
Connector End A	RJ45 Modular Plug
Connector End B	RJ45 Modular Plug
Nominal Cable Outer Diameter	4.0mm +/- 0.3mm
Wiring Scheme	T568A
Maximum Storage Temperature	60°C
Maximum Operating Temperature	60°C
Minimum Operating Temperature	-20°C
Flammability Rating	IEC60332-1-2
PoE Compatibility	PoE++ Type 3, rated to 100 Watts



VG BC STRJX4P				PINOUT			
L (mm)	T (mm)	L (mm)	T (mm)	P1(T568A)	P2(T568A)	WIRE	
300	±20	5000	±50	1	1	WHITE/GREEN	
500	±20	7500	±75	2	2	GREEN	
750	±20	10000	±100	3	3	WHITE/ORANGE	
1000	±30	15000	±150	6	6	ORANGE	
1500	±30	20000	±200	4	4	BLUE	
2000	±30	25000	±250	5	5	WHITE/BLUE	
3000	±30	30000	±300	7	7	WHITE/BROWN	
				8	8	BROWN	

