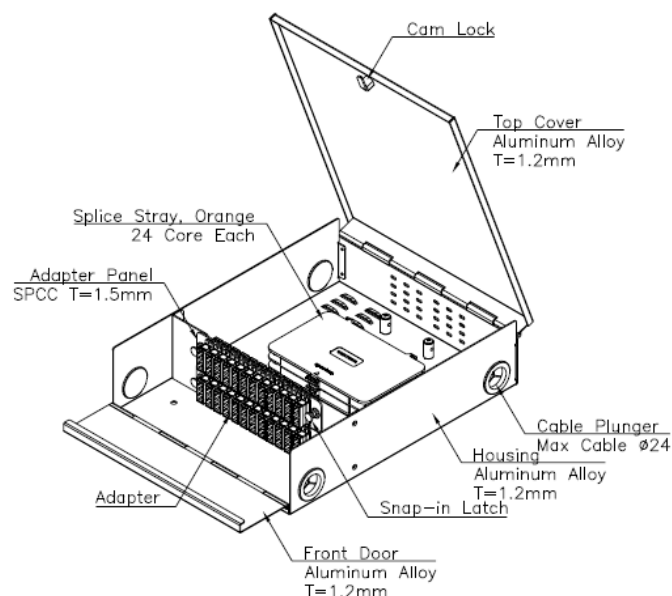
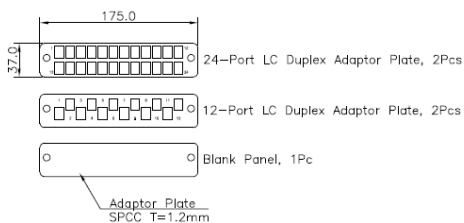
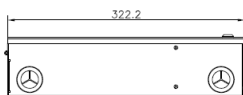
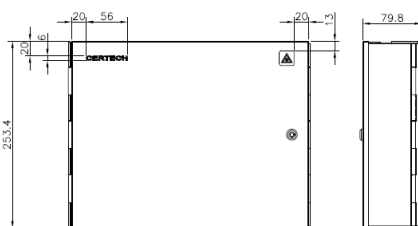
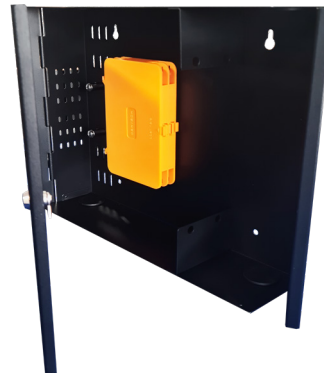


96 Core Fibre Wall Mount Enclosure

FEW96C



DESCRIPTION

The CERTECH 96F fibre wall mount enclosure is designed to manage and distribute fibre optic cables within a network. It provides a secure and organised way to splice / patch up to 96 fibres. These boxes are suitable for use in any indoor environment. The enclosure is fitted with multiple cable entry points and is lockable, providing security. The compact size makes this the ideal enclosure to use for high density fibre requirements where space is limited. Supplied with 2 x 24F & 2 x 12F adaptor plates, this enclosure is suitable for up to 96F in an LC duplex installation or up to 48F in an SC simplex installation.

FEATURES

- Can accommodate up to 96F (LC duplex) or 96F (SC simplex).
- Lockable front door.
- Supplied with 2 x double stack splice trays.
- Supplied with 2 x 24-port LC duplex plates, 2 x 12-port LC duplex plates & 1 x blank plate.
- Made from cold rolled steel & aluminium alloy.
- Powder coated black (RAL9005).
- 322.2 (W) x 253.4 (D) x 80mm (H).



DESIGNED AND MANUFACTURED TO AUSTRALIAN STANDARDS AND CONDITIONS