

# Pump Control Auxiliary Equipment

## SMS Alarm Sender



### FPC-30120

#### SMS Alarm Sender

A unique feature of the FPC-300 Dual Pump Controller is the coded Data Output, which can be utilized to provide a signal to a remote, compatible device such as this SMS Alarm Sender. The unique feature is that the coded data signal, derived from the Pump Controller's micro processor, is conveyed through a low voltage 2 wire connection and then decoded by the BMS unit. Once the signal is decoded the micro controller provides four inputs to the GSM modem which then in turn, sends SMS messages as configured.

#### Features

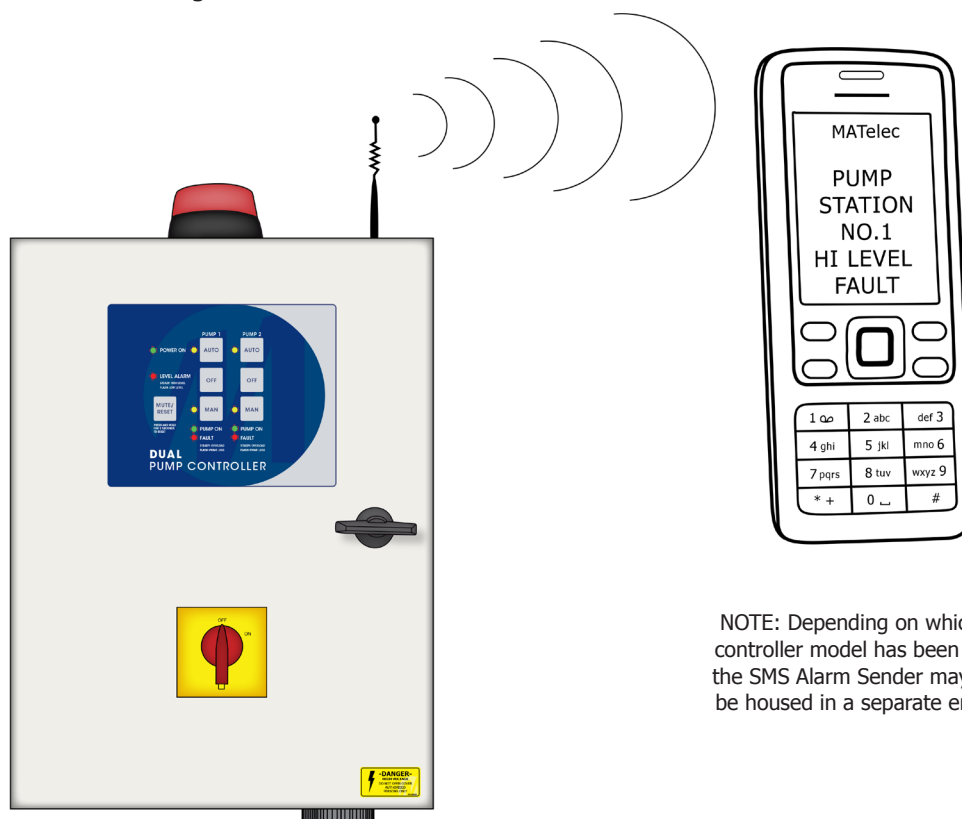
- Up to 5 separate phone numbers to send messages to
- Sending of a descriptive message whenever an alarm condition is initiated or cleared
- Sending of alert message if backup battery voltage drops too low

#### Kit Includes

- GSM modem (preconfigured with supplied phone numbers and SIM code)
- Antenna to suit
- 1.7Ah or 3Ah SLA battery
- 12V Power supply / battery charger

#### Notes

In order to pre-configure the GSM modem, the customer will need to supply an active SIM card, along with; up to 5 Phone numbers, all of which are messaged upon an alarm action. SIM code, so that the GSM modem can access the SIM card. Station name, to be included in any SMS sent, for identifying which pump station has sent the message.



NOTE: Depending on which pump controller model has been ordered, the SMS Alarm Sender may need to be housed in a separate enclosure.