

## GREEN POWER & ENERGY SAVING 8 WAY SURGE PROTECTED POWER MANAGER

DECEMBER'09

Designed specifically for power conservation, your Green Power Surge Protector will automatically cut off standby power 3 minutes after you've switched off devices. It is also equipped with "always on" outlets for continuous power to certain devices. Additionally, it can be operated using any IR remote, avoiding the clutter and confusion of too many controllers.

### Key Features

- "On/Off" switch with Integrated Circuit Breaker
- Use your own remote controller to operate the Power Manager
- Always On or High Current Outlets
- Grounded Outlets
- Surge Protection LED
- 2 Pairs DSS/Coax Connector for Surge Protection (PAL/Aerial Type)
- Power Consumption Display
- IR (Infrared) receiver
- External IR Remote Control Connector
- Combo Phone (RJ11) and Network (RJ45) Jacks
- 60° Rotating Cord With Strain Relief


 RJ11 &  
RJ45 COMBO  
1-IN / 1-OUT

 INCLUDES  
TELEPHONE  
CABLE - 6FT  
LONG

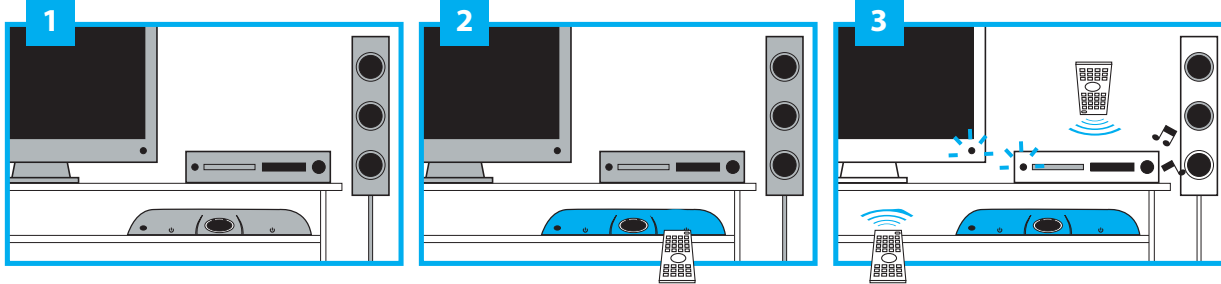
Specification	GP8ESSP
Surge Protected Indicator	Red
Power ON Indicator	Red
IR Indicator	Blue
Surge Protected Failure	Surge circuit shut down & auto power shut down
Package	Colour Box

Specification		GP8ESSP
Electric Rating	Voltage	240 V
	Current	10 A
	Power	2400 Watts
Surge Energy Joule Rating		3672J
Surge Protection Mode		L-N, L-G, N-G
Clamping Voltage		800V
Max. Peak Spike Current		144,000A
Max. Spike Voltage		6KV
EMI/RFI Noise Filter	Frequency	150KHz-100MHz
	Attenuation	Up to 75dB
Tel/Fax/Modem & Network Line Protection	Jack Type	RJ45/RJ11 Combo Jack (1-in/1-out)
	Network	10/100 Base-T (Cat5)
DSS/COAX Cable Protection	Surge Arrestor	Gas Tube
	Breakdown Volts	<75 V
	Insertion Loss	<0.1 dB
	Line Protection	2 pair (Aerial Type)

## GREEN POWER MANAGER 8 WAY SURGE PROTECTED

DECEMBER'09

### Easy 5 Step Installation

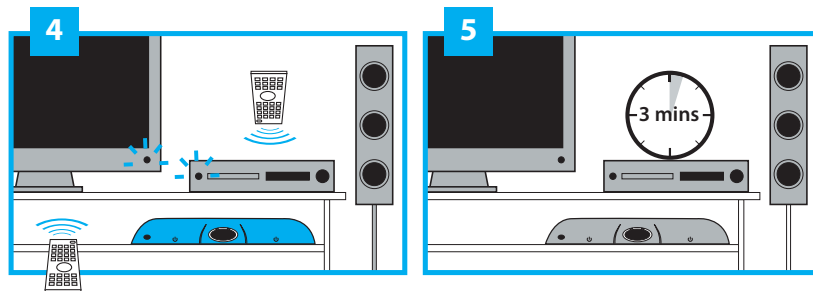


For devices with an "On/Off" switch, the switches must be in the "On" position. They should not be in standby mode. Now plug them into your new CABAC Green Power Manager and turn them back on to standby mode only.

Turn on the CABAC Green Power Manager with any of your IR controllers

Once the Power Manager is on, click the individual devices "On/Off" button on its remote to turn the device on. For example, using your TV remote click the on/off button to turn the TV on.

### To Finish for Power Saving



Use the individual device remote to turn off the device when you are not using it and your CABAC Green Power Manager will do the rest.

After 3 minutes with a reduced power consumption of at least 70% and with an existing power consumption of no more than 180 Watts, the Power Manager will electronically turn off all remaining devices that are plugged into the controlled outlets.

As you turn the devices on, the Power display at the front will give you an instant reading of the amount of power your device is consuming.

**Note:** For devices that rely on internal clocks, such as program recorders, the device must be plugged into the "Always On" power outlet otherwise the device will not work correctly and not record your programs.



**"On/Off" switch with Integrated Circuit Breaker**  
An on/off switch that also provides overload protection for up to 10 Amps

**Always On Outlet**  
For devices that require continuous power

**Automatically Controlled Outlets**  
For devices that can be switched off automatically

**External IR Remote Control Connector**

