

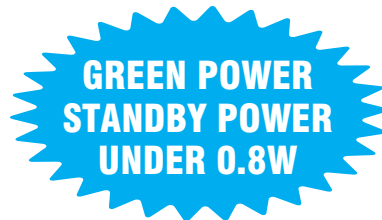
## GREEN POWER & ENERGY SAVING 8 WAY SURGE PROTECTED POWER MANAGER

**GP8ESSP/GP8ESSPBK**

Designed specifically for power conservation, your Green Power Surge Protector will automatically cut off standby power 3 minutes after you've switched off devices. It is also equipped with "always on" outlets for continuous power to certain devices. Additionally, it can be operated using any IR remote, avoiding the clutter and confusion of too many controllers.

### Key Features

- "On/Off" switch with Integrated Circuit Breaker
- Use your own remote controller to operate the Power Manager
- Always On or High Current Outlets
- Grounded Outlets
- Surge Protection LED
- 2 Pairs DSS/Coax Connector for Surge Protection (PAL/Aerial Type)
- 1 Pair PAL to F type adaptors
- Power Consumption Display
- IR (Infrared) receiver
- External IR Remote Control Connector
- Combo Phone (RJ11) and Network (RJ45) Jacks
- 60° Rotating Cord With Strain Relief


**GP8ESSP**

**GP8ESSPBK**

**RJ11 &  
RJ45 COMBO  
1-IN / 1-OUT**
**INCLUDES  
TELEPHONE  
CABLE - 6FT  
LONG**
**INCLUDES  
TELEPHONE  
CABLE - 6FT  
LONG**
**1 PAIR  
PAL TO F TYPE  
ADAPTORS**

Specification	GP8ESSP/GP8ESSPBK
Surge Protected Indicator	Red
Power ON Indicator	Red
IR Indicator	Blue
Surge Protected Failure	Surge circuit shut down & auto power shut down
Package	Colour Box

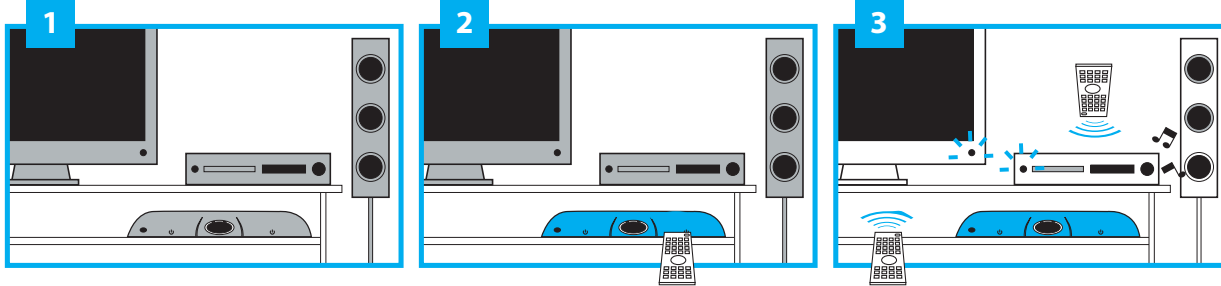
Specification		GP8ESSP/GP8ESSPBK
Electric Rating	Voltage	240 V
	Current	10 A
	Power	2400 Watts
Surge Energy Joule Rating		3672J
Surge Protection Mode		L-N, L-G, N-G
Clamping Voltage		800V
Max. Peak Spike Current		144,000A
Max. Spike Voltage		6KV
EMI/RFI Noise Filter	Frequency	150KHz-100MHz
	Attenuation	Up to 75dB
Tel/Fax/Modem & Network Line Protection	Jack Type	RJ45/RJ11 Combo Jack (1-in/1-out)
	Network	10/100 Base-T (Cat5)
DSS/COAX Cable Protection	Surge Arrestor	Gas Tube
	Breakdown Volts	<75 V
	Insertion Loss	<0.1 dB
	Line Protection	2 pair (Aerial Type)



One Call → One Day → One Delivery

## GREEN POWER MANAGER 8 WAY SURGE PROTECTED

### Easy 5 Step Installation

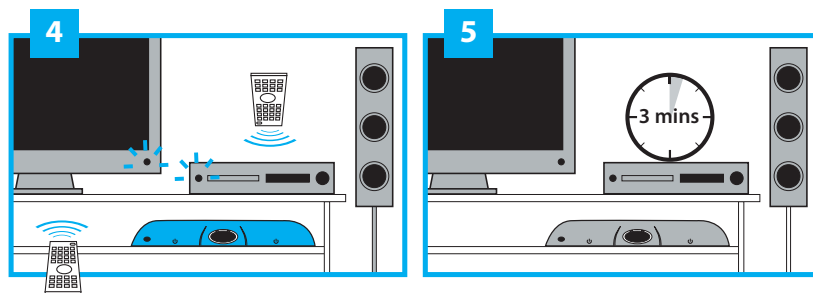


For devices with an "On/Off" switch, the switches must be in the "On" position. They should not be in standby mode. Now plug them into your new CABAC Green Power Manager and turn them back on to standby mode only.

Turn on the CABAC Green Power Manager with any of your IR controllers

Once the Power Manager is on, click the individual devices "On/Off" button on its remote to turn the device on. For example, using your TV remote click the on/off button to turn the TV on.

### To Finish for Power Saving



Use the individual device remote to turn off the device when you are not using it and your CABAC Green Power Manager will do the rest.

After 3 minutes with a reduced power consumption of at least 70% and with an existing power consumption of no more than 180 Watts, the Power Manager will electronically turn off all remaining devices that are plugged into the controlled outlets.

**Note:** For devices that rely on internal clocks, such as program recorders, the device must be plugged into the "Always On" power outlet otherwise the device will not work correctly and not record your programs.

As you turn the devices on, the Power display at the front will give you an instant reading of the amount of power your device is consuming.



**"On/Off" switch with Integrated Circuit Breaker**  
An on/off switch that also provides overload protection for up to 10 Amps



**Always On Outlet**  
For devices that require continuous power

**Automatically Controlled Outlets**  
For devices that can be switched off automatically

**External IR Remote Control Connector**



**2 Pairs DSS/Coax Connector for Surge Protection (PAL/Aerial Type)**  
Provides protection from surges on cable, DSS and cable modem installations



**Combo Phone (RJ11) and Network (RJ45) Jacks**  
Provides protection against surges on either phone or network lines

TOLL FREE PHONE: 133 122 | [www.cabac.com.au](http://www.cabac.com.au)

