

Robertshaw ST Series Electric Water Heater Thermostats

The Robertshaw ST Series Electric Water Heating Thermostats have replaced the EWT1, EWT1L2, EWT2L2, EWT1L2S, W1, W1M2, W2M2, SH and SA Series Thermostats. The models of controls available in the Aftermarket have been planned such that similar Robertshaw specifications are interchangeable. Additionally, where Off-Peak dual element controlled water heater thermostats require replacement, the ST can be mixed with EWT & WM Series.

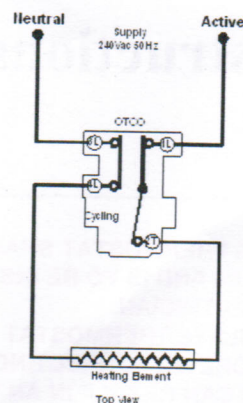
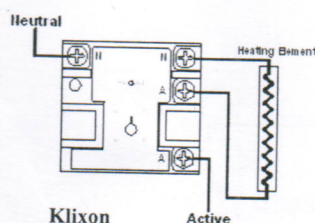
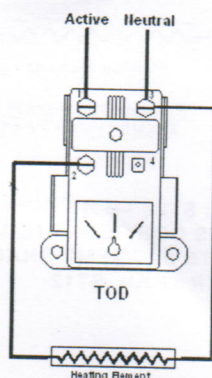
IMPORTANT! You must fit the correct model thermostat. Refer to the guide below for the correct model replacement.

Cross-Reference Guide

Model	Replaces	Comments
ST10	Robertshaw-W1 & EWT1 Series	Thermostat only. No OTC Included
ST12	Robertshaw W1M2 & EWT1L2 Series	Thermostat & Manual Reset OTC. Used for mains pressure electric water heaters
ST22	Robertshaw W2M2 & EWT2L2 Series	Thermostat & Manual Reset OTC. Used for top element of dual element mains pressure electric water heaters

Note: OTC = Over Temperature Cut-Out

Model	Corresponding Terminal Locations					
EWT 1L2/2L2	1L	2T	3L	4L	4T	2L/1T
ST 12/22	1	2	3	4	5	No Connection
EWT1	1T	2T				
ST10	1	2				



Wiring Diagram : ST12

At all times refer to the requirements of the Dept of Health authorities in your State with regard to their requirements for minimum and maximum temperature settings for storage water heaters. Set the pointer on the replacement thermostat to the same setting as the original thermostat being replaced. If in doubt, do not set above 60°C.

WARNING: Water at or above 60°C can cause a deep scald to a child in 1 (one) second.

Robertshaw®

inven'sys
Controls